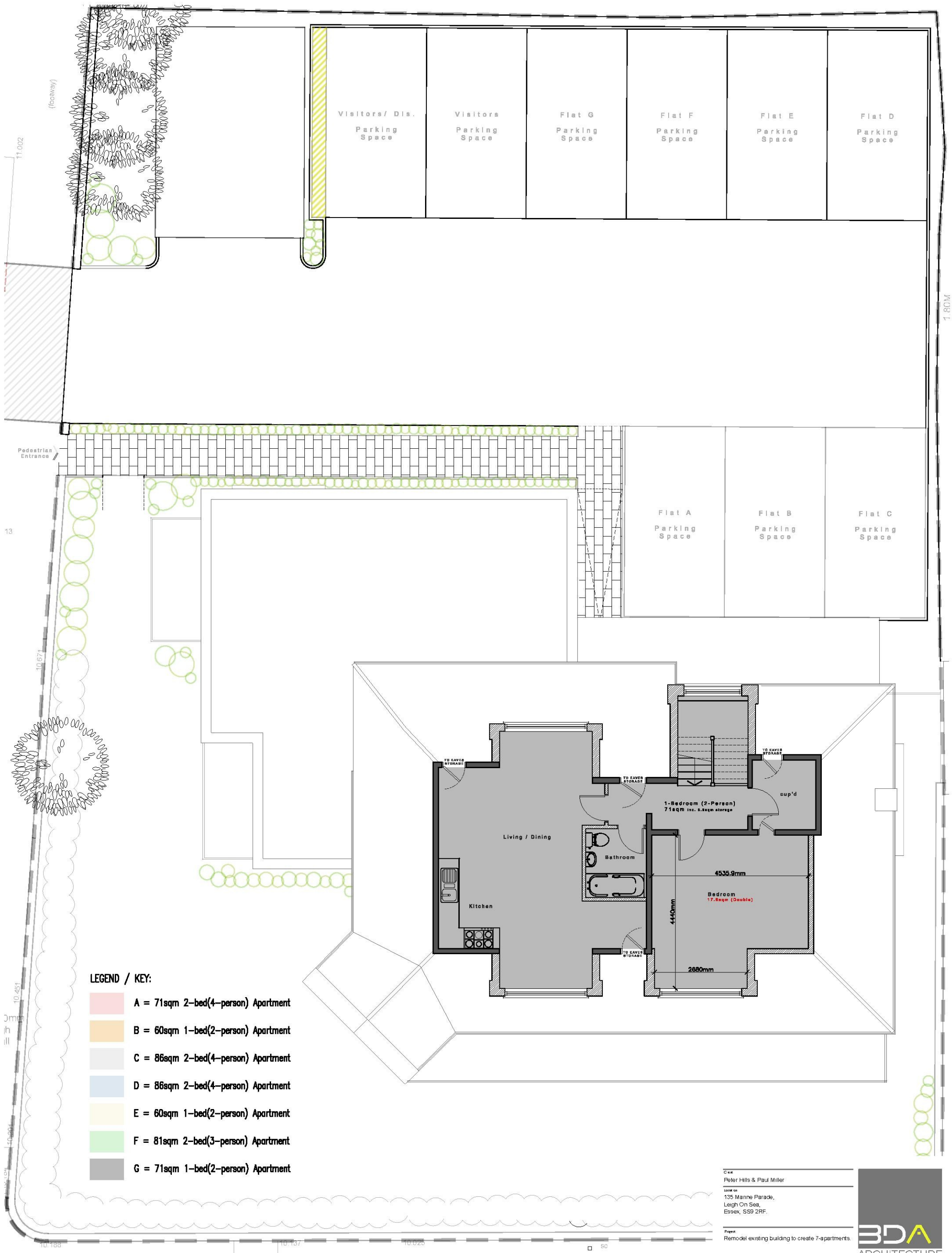


# PLANNING DRAWING



© Copyright 2018 BDA Architecture Ltd  
 This drawing is copyright of BDA. No reproduction or copying without prior consent of BDA.  
 BDA's drawings are prepared by its registered architects and are subject to the provisions of the Planning Act 1990.  
 Do not scale from this drawing - Use figured dimensions only - (a) elevations & dimensions to be checked on site



### LEGEND / KEY:

- A = 71sqm 2-bed(4-person) Apartment
- B = 60sqm 1-bed(2-person) Apartment
- C = 86sqm 2-bed(4-person) Apartment
- D = 86sqm 2-bed(4-person) Apartment
- E = 60sqm 1-bed(2-person) Apartment
- F = 81sqm 2-bed(3-person) Apartment
- G = 71sqm 1-bed(2-person) Apartment

## PROPOSED SECOND FLOOR PLAN

1:100

Client  
 Peter Hills & Paul Miller  
 Location  
 135 Marine Parade,  
 Leigh On Sea,  
 Essex, SS9 2RF.

Project  
 Remodel existing building to create 7-apartments.

(Proposed Second Floor Plan)

Drawn: cp      Checked: srl  
 Date: 1:100      Date: August 2018  
 Drawn by: No      Rev: 17.195/09

**BDA**  
 ARCHITECTURE  
 RIBA  
 Chartered Practice  
 Studio on the Green  
 Bishops Cleeve, Goff C 10  
 Goff Road, Cannock, Staffs, SS42 2DA  
 Telephone: 01702 548 588  
 www.bdaarchitecture.co.uk